



## Manufacturing of steel axles

- ✓ Forging of axles
- ✓ Premachining of forged axles
- ✓ Final forging axles incl. the finishing



We offer you complete production and delivery of the **steel axles** including the **finishing** according to your technical drawings or technical drawings which we are able to draw up according to your requirements at our Design and Development Department. The axles could be supplied **forged** or **rough machined** too. Dimension of axles depends on your wishes and demands. We manufacture forged wheel hubs and spindles for railway applications, rear-wheel-drive transmissions shafts and spindles for light-trucks applications and hollow axles to deliver maximum performance levels. Steel axles offers features and specifications to accomodate specific application needs depended on customer's requirements.

We have a great experencies with manufacturing of wheel hubs and axles for a long time.

### Technical data:

Dimension of forgings	
Min. diameter of axle - $D_{min}$	100 mm
Max. diameter of axle - $D_{max}$	250 mm
Min. length of axle - $L_{min}$	1000 mm
Max. length of axle - $L_{max}$	3000 mm
Quality Material – Steel grade of Quality Material	
A4T	CrV
A1N	C45
34CrNiMo6	other acc. to customer's requirements





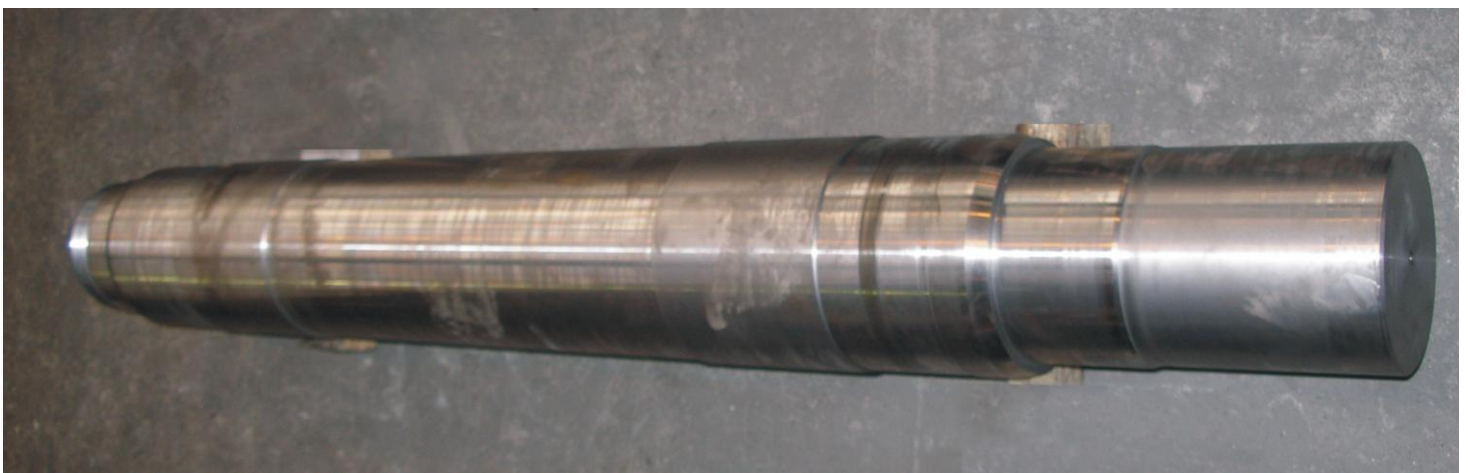
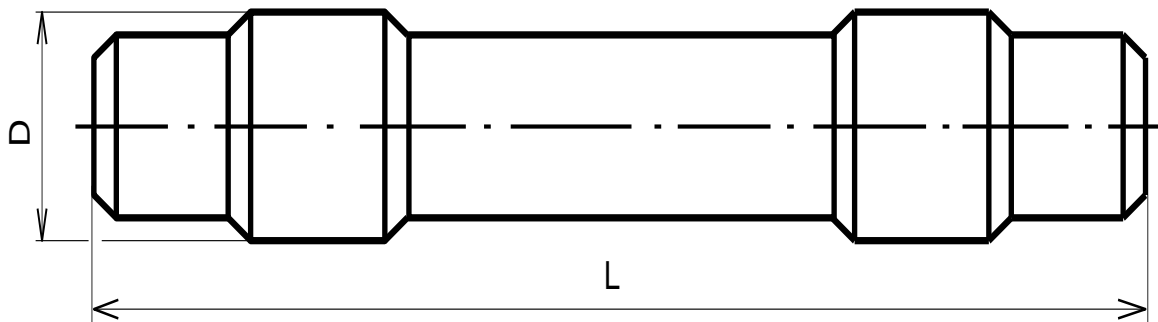
## MANUFACTURING OF STEEL AXLES – FORGINGS, PREMACHINING, FINISHING

### Performance:

Input material for axles shall be made from melted steel by our mother company TŘINECKÉ ŽELEZÁRNY by basic-lined converter or electric-furnace process with caisson for vacuum treatment of steel. Steel ingots shall be rolled into blooms. Axles shall be performed in steel grades acc. to EN 10204.3.2 (Czech Standards specification ČSN EN 13261+A1) or acc. to UIC 811-1 International Standard. Axles forgings could be approved with quality inspection of České dráhy (Czech Railways) and are enclosed with chemical composition documents of quality material, mechanical tests incl. tensile, strength, elongation, hardness, notch toughness, falling-weight tests and ultrasonic tests of machined surface of axles. Other grades of steel acc. to UIC Standards, and other ones is possible up to the customer's needs. It is possible to perform normalizing or other type of heat treatment upon mutual agreement declared with test acc. to Czech Standards.

Rough machined axles are being offered without any preservation and packing. Axles shall be placed on wooden cradles and tightened with steel tape. Finish machined axles shall be protected against corrosion by painting all surfaces with temporary preventives Tectyl. Axle's ends shall be protected against mechanical damages with covers or polyethylene foil.

Capability ratings, features and specifications are open for modify and vary depending upon the type of use and your particular demands.



**Strojírny a stavby Třinec, a.s.**

Průmyslová 1038, Staré Město

739 61 Třinec

Česká republika

**Kontakt:**

**Tel.:** +420 558 532 316

**Fax:** +420 558 321 328

[info@sas-trinec.cz](mailto:info@sas-trinec.cz)